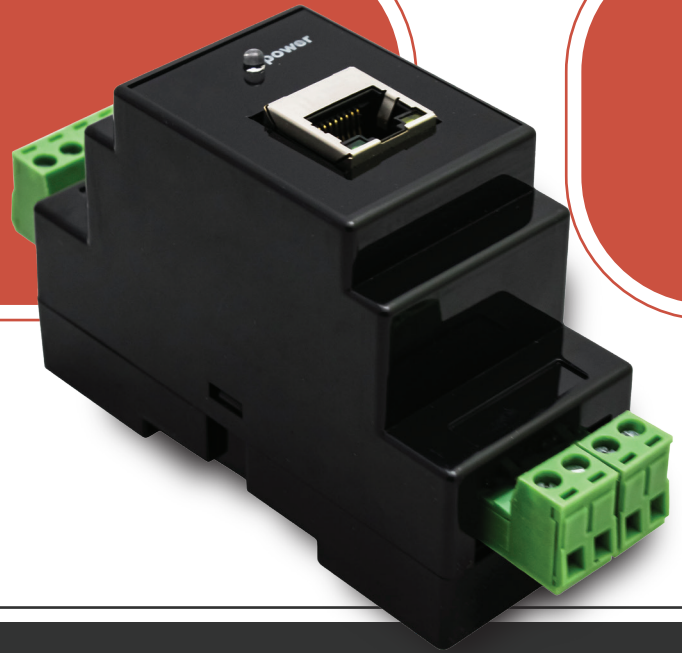




SENSOLIST



## SENSOLIST RTU/PM1200&2100

### Description

This product is a smart device for monitoring PM1200 and PM2100 modules of Schneider Electric company. This module is usually used in electrical panels of data centers and server rooms, and its function is to display the current status and electrical quantities.

The SENSOLIST-PM1200 is responsible for collecting data from the PM2100 and PM1200 modules and transmitting it under standard protocols.

By supporting various communication protocols such as Modbus/TCP IP, SNMP, and Modbus/RTU, it can be integrated and monitored by SENSOLIST DCIM software, as well as all common software like SolarWinds, PRTG, OpManager, etc.

This device has an internal web server that allows the status of variables to be viewed online.

### Features



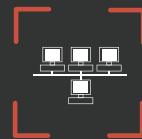
RS-485 INDUSTRIAL



WEB Interface



RAIL Mount



LAN



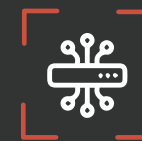
Buffer/Data Logger



SMS Gateway

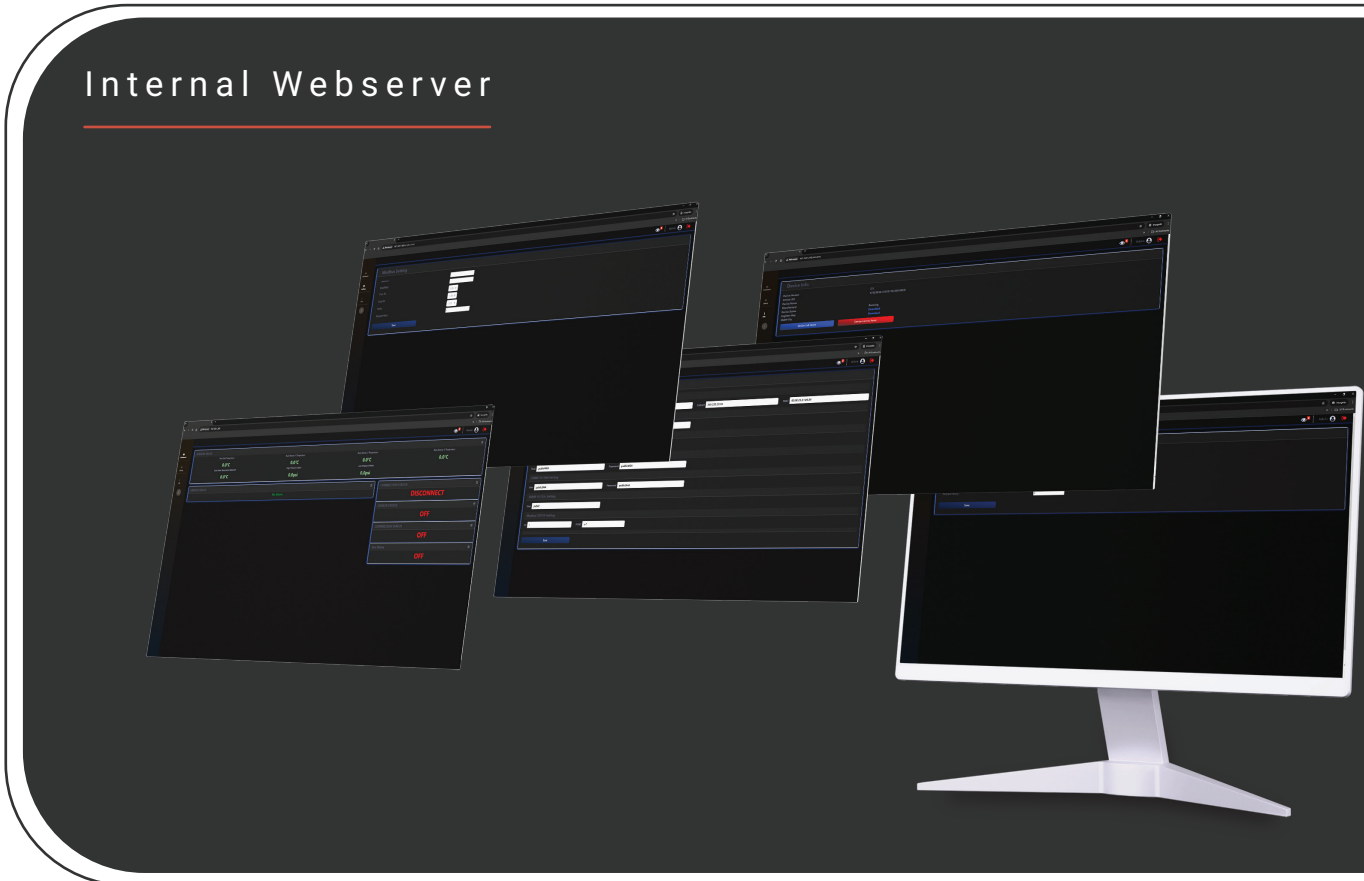


ARM CORTEX M4



SNMP Protocol

| General                |   |   |   |
|------------------------|---|---|---|
| Processor              | ARM processor with encryption accelerator |   | ✓ |
| Memory                 | -   |   | ✓ |
| Operating System       | Embedded RTOS                             |   | ✓ |
| Master Protocols       | Modbus (RTU/TCP/ASCII)                    |   | ✓ |
| Slave Protocol         | Modbus                                    |   | ✓ |
| IP Communications      | Web server , Modbus , Ethernet RJ45       |   | ✓ |
| PoE Support            | 24V                                       |   | ✓ |
| Power Supply           | 24 VDC                                    |   | ✓ |
| SNMP                   | Agent Ver.1 , 2c , 3 , Trap               |   | ✓ |
| Channels               |   |   |   |
| Communication Channels | RS-485                                    | 3 | ✓ |
| Physical               |   |   |   |
| Packaging              | Rack Mounted                              |   | ✓ |
|                        | Wall Mounted                              |   | ✓ |
|                        | DIN-rail Mounts                           |   | ✓ |
| Environmental          | -40°C to +70°C, %95-5 RH                  |   | ✓ |
| Compatible With        |   |   |   |
| SENSOLIST-RTU Series   |   |   | ✓ |
| SENSOLIST-PSIM Series  |   |   | ✓ |
| SENSOLIST-DCIM Series  |   |   | ✓ |



## Internal Webserver

