



SENSOLIST



SENSOLIST RTU/24OUTPUT

The 24-output module in SENSOLIST's **IPANEL solution** category is a device to control the available outputs, including MCCBs, MCBs, power meter devices, and power input in the electrical panel. Due to the support of RS-485 port and Modbus protocols, it can be connected to all industrial devices.

- Connects to all SENSOLIST RTUs
- Has RTC (Real-Time Clock) with a backup battery
- Supports 32 devices with the Modbus/RTU protocol
- Microcontroller architecture based on ARM-Cortex M4 chips
- Connects multiple devices via the RS-485 port on a two-wire BUS

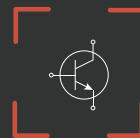
Features



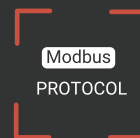
RS-485 INDUSTRIAL



1-WIRE UNI



OUTPUT Transistor



Modbus
PROTOCOL

ASCII/RTU



RAIL Mount



INPUT Dry contact

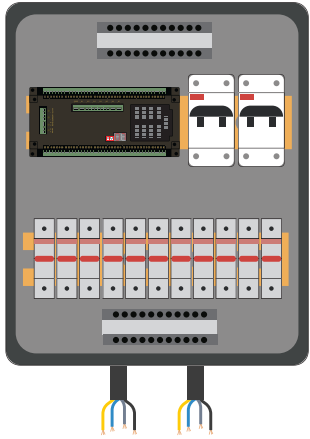
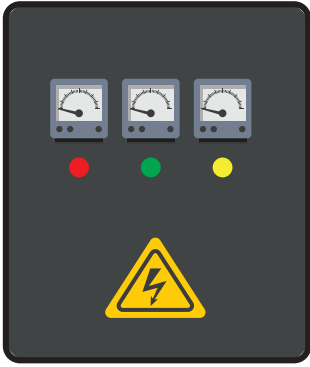


ARM CORTEX M4



Relay OUTPUT

Technical Specification



General		
Processor	ARM processor with encryption accelerator	✓
Memory	-	✓
Operating System	Embedded RTOS	✓
Master Protocols	Modbus (RTU/TCP)	✓
Slave Protocol	Modbus	✓
Channels		
Communication Channels	RS-485	2 ✓
Physical		
Power Supply	24 VDC	✓
Packaging	Rack Mounted	✓
	Wall Mounted	✓
	DIN-rail Mounts	✓
Environmental	-40°C to +70°C, %95-5 RH	✓
Plant Input/Output		
Relay Output	24 16 A	✓
	3 3 A	✓
Digital Outputs	1 TR	✓
Digital Inputs	7	✓
1-wire Sensor	1 T&H Sensor	✓

